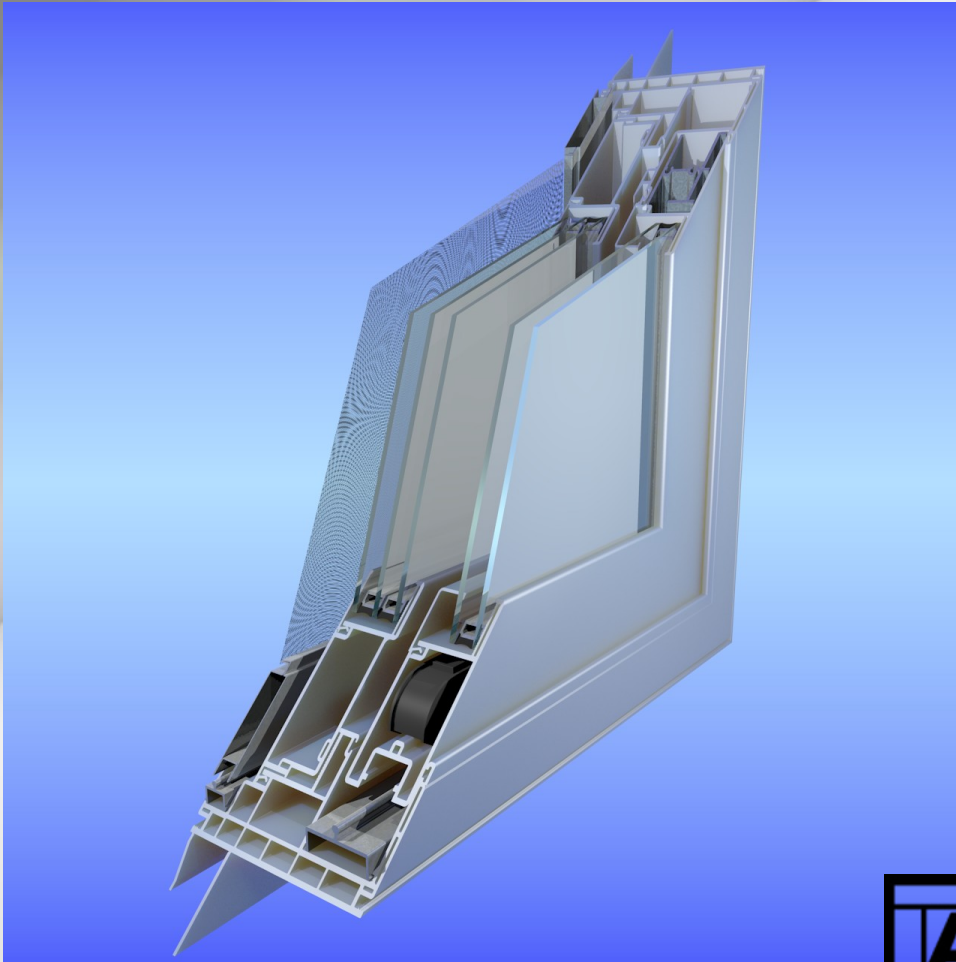


BAVARIAN POLYMERS

5050 SERIES DIRECT-GLAZED SLIDING GLASS DOOR



SINGLE PANEL - DP50 - 1-1/4" IG - IMPACT - R5.6 - INTEGRAL J-CHANNEL

WHITE, TAN OR CLAY - LAMINATES available in either wood grains or color

FEATURES AND BENEFITS

FRAME

- Typical wall thickness .075"
- 4-9/16" frame depth; accessory/trim grooves inside and outside
- Weep slots do not interfere with accessory grooves
- Available configurations: OX, XO, OXO, OXXO
- .750" x .800" integral siding J-Channel; can be slit off inline
- Integral nailing fin (1-1/4" set-back) can be removed for retro-fit (flush) applications
- Dual weatherstripping all around
- Removable panel and screen roller tracks (aluminum)
- Snap-in cover for unused jamb track available; no exposed installation screws

PANELS

- Typical wall thickness .075"
- 7/8" glazing leg height
- Exterior-glazed; designed for impact testing to Miami-Dade and ASTM standards
- 1-9/16" x 3" profiles; 3/4" glass penetration
- Fixed glass adapter rails available for equal glass heights and grid alignment
- Panel stiles and rails are the same profile
- Mortise lock recessed into leadstile groove for increased stile penetration into jamb
- 3/16" (minimum) panel take-out clearance
- Glazing options from 3/4" I.G. to 1-1/4" I.G.
- Glass stops snap in perpendicular to the glazing for ease of insertion
- Dual-weatherstripped integral interlocks
- Large interlock hollows for optional high-performance reinforcement
- Interlock reinforcement is identical in both parts

HARDWARE

- Designed to accept a wide range of single and multi-point locks & trim-sets
- Secondary locks (thumb-turn) optional
- Designed to accept many commercially-available roller assemblies
- Single or tandem wheels and end or side-adjust rollers optional
- Anti-liftout blocks available; same part used as a keeper shim/screw cover

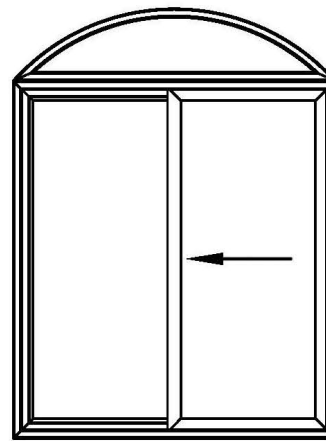
PERFORMANCE

- DP50 possible in a 8'0"/8'0" door size with the proper reinforcement
- U-value = U0.25 (R4) with 7/8" IG & dual low-E; U0.20 (R5) possible with triple-glazed 1-1/4" IG
- Zone 4 impact rating possible when the required interlayer and sealant are utilized
- Forced Entry Resistance (FER) rating is dependent on the lock hardware specified

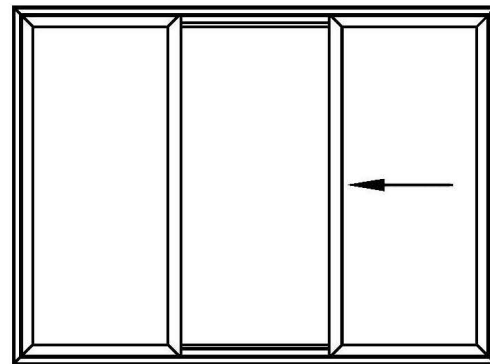
MISCELLANEOUS

- Reinforcement options; extruded aluminum and roll-formed steel
- ADA-compliant accessible sill available

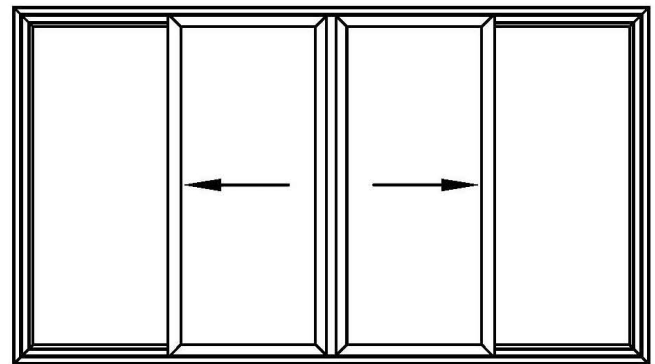
Possible Configurations



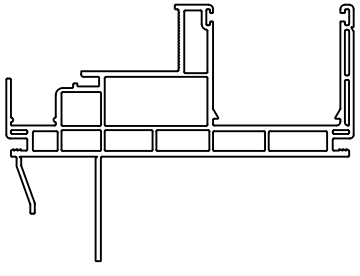

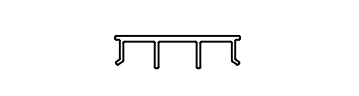

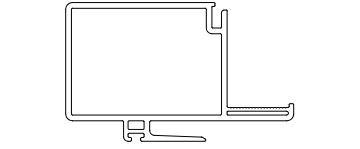

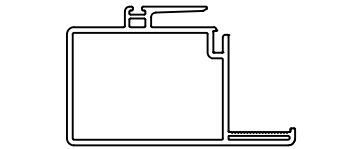
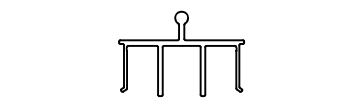
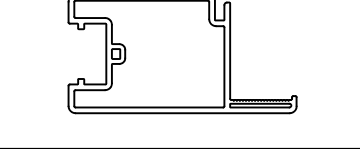
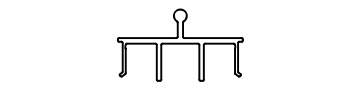
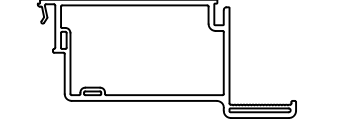
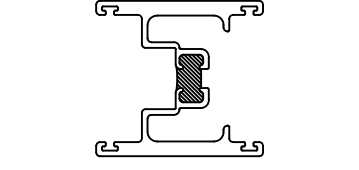
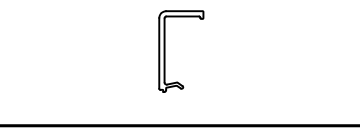
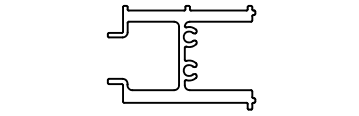
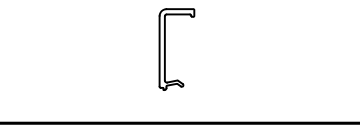
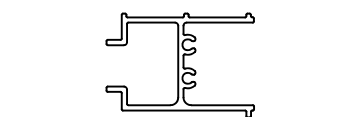
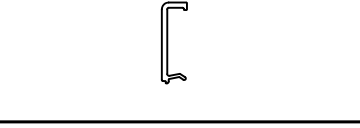
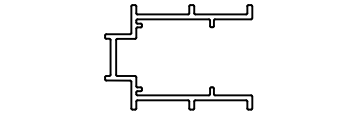
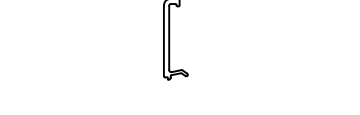

XO (OX)



XOO (OOX)



OXXO

GRAPHIC-VINYL	DESC.	PART#	GRAPHIC-VINYL (con't)	DESC.	PART#
	DIRECT-GLAZED MAINFRAME	XV-5051		1-1/4" GL. STOP	XV-5061
				ANTI-LIFT CLIP & KEEPER SHIM	XV-5063
				INT. JAMB COVER & PANEL STOP	XV-5064
	EXTERIOR INTERLOCK	XV-5053		EXTERIOR FRAME COVER	XV-5070
	INTERIOR INTERLOCK	XV-5054			
				GRAPHIC-ALUMINUM	DESC.
				PANEL ROLLER TRACK VISION PR600C ROLLER	XA-5068
	HORIZ. RAIL & VERT. STILE	XV-5055		PANEL ROLLER TRACK AMESBURY 1936-C2 ROLLER	XA-5072
	FIXED PANEL RAIL ADAPTOR	XV-5056		DXXD ASTRAGAL	XA-5078
	3/4" GL. STOP	XV-5057		H.D. INTLK. REINF.	XA-5088
	7/8" GL. STOP	XV-5058		STD. INTLK. REINF.	XA-5093
	1" GL. STOP	XV-5059		RAIL & STILE REINFORCEMENT AMESBURY/VISION MORTISE LOCKS	XA-5090
	1-1/8" GL. STOP	XV-5060		SCREEN ROLLER TRACK	XA-5091

Part No: 5050

Revision: N/A

Title: SERIES 5050 DIRECT-GLAZED SGD-ALL PROFILES

BAVARIAN POLYMERS

Drawing No: G-5050-7

Sheet No: 1 of 1

CAD Scale: 1:1

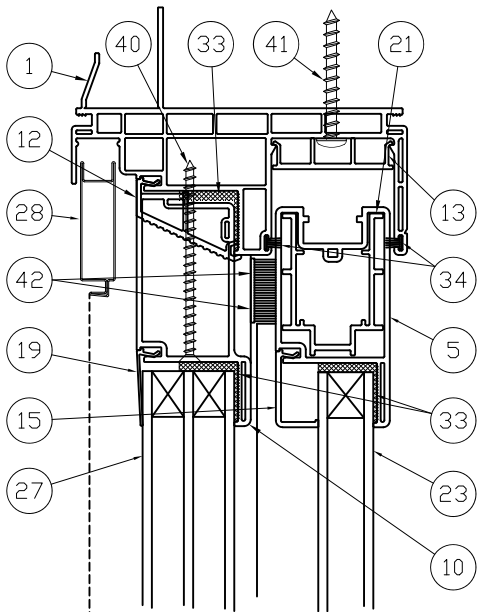
Drawn By: RJK

Approved By: _____

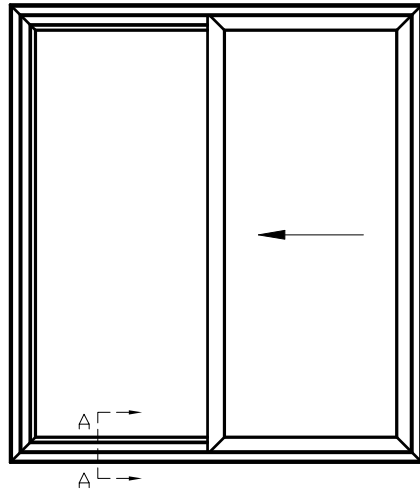
Date: 11-11-11

Material: Poly-Vinyl Chloride (PVC)

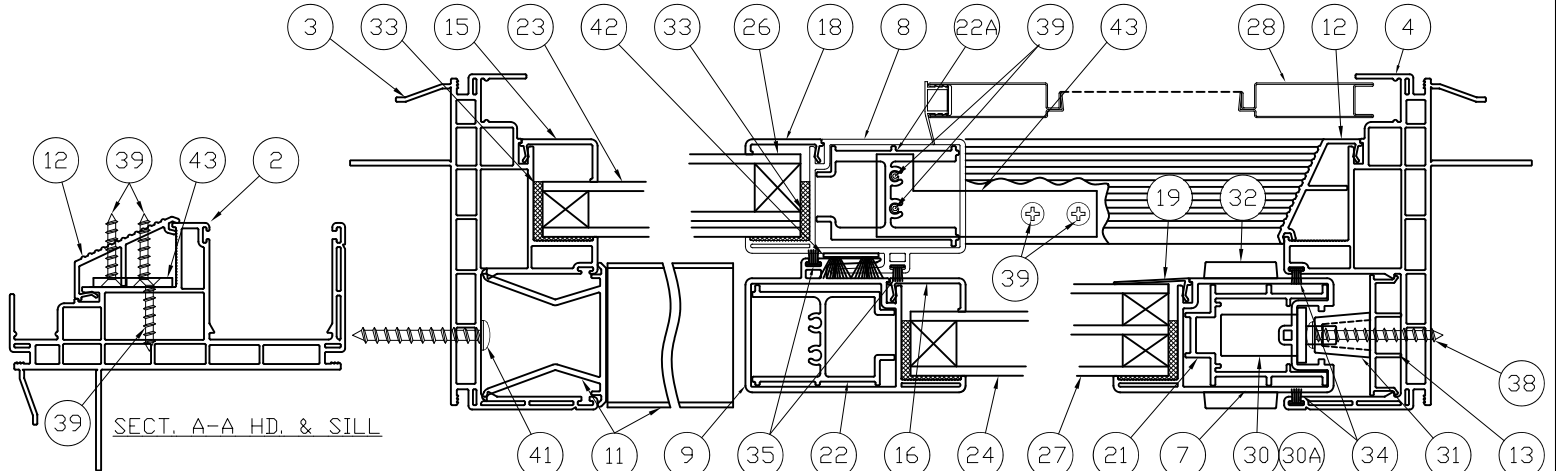
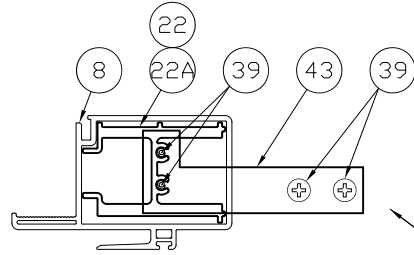
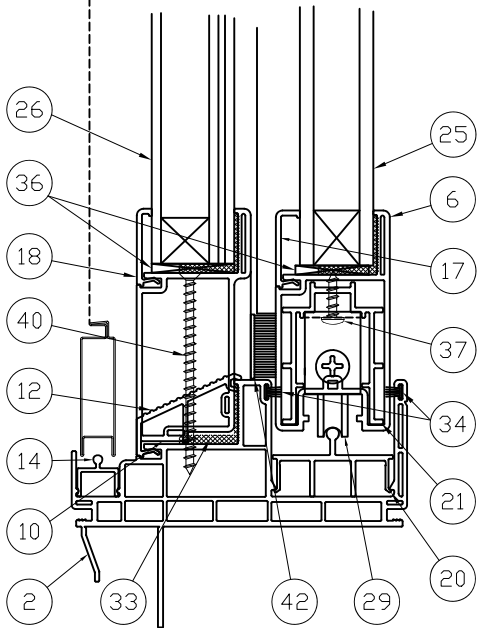
The material contained herein is proprietary and confidential to BAVARIAN POLYMERS and any unauthorized use, duplication, or dissemination of this material, without the expressed written consent of Bavarian Polymers, is strictly prohibited.



XD - INTERIOR ELEVATION



ITEM	PART NO./SIZE	DESCRIPTION	FAB. DWG/NOTES	VENDOR/SIZE	QTY.
1	5051	FRAME HEAD	F-5051-7	BAVARIAN	1
2	5051	FRAME SILL	F-5051-7	BAVARIAN	1
3	5051	FRAME FIXED-SIDE JAMB	F-5051-3	BAVARIAN	1
4	5051	FRAME LOCK-SIDE JAMB	F-5051-2	BAVARIAN	1
5	5055	PANEL TOP RAIL	F-5055-1A	BAVARIAN	1
6	5055	PANEL BOTTOM RAIL	F-5055-1A	BAVARIAN	1
7	5055	PANEL LOCK STILE	F-5055-2B, 3A	BAVARIAN	1
8	5053	FRAME EXTERIOR INTERLOCK	F-5053-1A	BAVARIAN	1
9	5054	PANEL INTERIOR INTERLOCK	F-5054-1-1	BAVARIAN	1
10	5056	FIXED GLASS RAIL ADAPTOR	F-5056-1B	BAVARIAN	2
11	5064	FIXED-SIDE JAMB COV./PANEL STOP	F-5064-1	BAVARIAN	1/2
12	5070	HEAD, SILL & LOCK-SIDE JAMB COV.	F-5070-1, 3	BAVARIAN	1 ea
13	5063A	ANTI-LIFTOUT BLOCK/KEEP. SHIM	F-5063-3, 4	BAVARIAN	1 ea
14	5065	SCREEN ROLLER TRACK	F-5065-1	BAVARIAN	1
15	5057	3/4" IG GLASS STOP	F-50xx-1	BAVARIAN	8
16	5058	7/8" IG GLASS STOP	F-50xx-1	BAVARIAN	8
17	5059	1" IG GLASS STOP	F-50xx-1	BAVARIAN	8
18	5060	1-1/8" IG GLASS STOP	F-50xx-1	BAVARIAN	8
19	5061	1-1/4" IG GLASS STOP	F-5061-1	BAVARIAN	8
20	5072	PANEL ROLLER TRACK	F-5072-1	X	1
21	5090	RAIL/STILE REINFORCEMENT	F-5090-1,2	X	2/1
22	5093	STD. INTERLOCK REINFORCEMENT	F-5093-1, 2	X	2
22A	5088	H.D. INTERLOCK REINFORCEMENT	F-5088-1, 2	X	2
23	X	3/4" INSULATING GLASS	X	X	2
24	X	7/8" INSULATING GLASS	X	X	2
25	X	1" INSULATING GLASS	X	X	2
26	X	1-1/8" IG-IMPACT GLASS	X	X	2
27	X	1-1/4" TRIPLE ACOUSTICAL GLASS	X	X	2
28	X	ROLLING SCREEN	X	X	1
29	1936-C2	TANDEM ROLLER-1.5" WHEELS	STEEL/S.S.	AMESBURY	2
30	555(-84)-1912	SINGLEPOINT LOCK-PLATED & S.S.	X	AMESBURY	1
30A	2817(-84)-2450	MULTIPOINT LOCK-PLATED & S.S.	X	AMESBURY	1
31	2264 or 2496	KEEPERS- 2264/555; 2496/2817	X	AMESBURY	1
32	X	XXX HANDLE SET	X	AMESBURY	1
33	X	STRUCTURAL ADHESIVE/SEALANT	X	X	A.R.
34	.187" x .220"	HIGH-DENSITY CENTERFIN PILE	X	X	A.R.
35	.187" x .250"	HIGH-DENSITY CENTERFIN PILE	X	X	A.R.
36	0.125"x1.25"x2"	NEOPRENE SETTING BLOCK	X	X	A.R.
37	#8 x 5/8"	PAN HEAD TYPE A SCREW	ATTACH ROLLERS	X	2
38	#10 x 1-3/4"	PAN HEAD TYPE A SCREW	ATTACH KEEPER	X	2/3
39	#8 x 1"	FLAT HEAD TYPE A SCREW	ATTACH INTLK.	X	8
40	#8 x 2-3/4"	FLAT HEAD TYPE A SCREW	ATTACH ADAPTOR	X	A.R.
41	X	INSTALLATION SCREW	X	X	A.R.
42	P-5085/P-5085-1	ADHESIVE-BACKED PILE PAD	.450" HGT. 2-FIN	X	3
43	P-5089	S.S. FIXED INTLK. ATTACH. BRKT.	ATTACH INTLK.	X	2



Do Not Scale Drawing Dimensions. All Dimensions in "[]" Are In Millimeter Equivalents.

Rev	By	Appv'd	Date	Revisions	Area
A					0.000 in. ²
B					Weight
C					0.000 lbs./ft.

Part No: 5050	Revision: N/A
Title: SER. 5050 XD DIRECT-GLAZED SGD w/ADAPT.	
Drawing No: A-5050-1	WITH FIX. INTLK BRKT.
Scale: 1:1	Drawn By: RJK
Date: 10-4-13	Approved By: _____
Material: Poly-Vinyl Chloride (PVC)	

BAVARIAN POLYMERS

Tolerances (Except As Noted)
 Decimals: ± 0.010" [0.25mm]
 Fractions: ± 1/100" [0.25mm]
 Angles: ± 0° - 30°
 Other: ± N/A